

MiNiFi Java Agent Installation

Date published: 2019-04-15

Date modified: 2022-04-27



Legal Notice

© Cloudera Inc. 2024. All rights reserved.

The documentation is and contains Cloudera proprietary information protected by copyright and other intellectual property rights. No license under copyright or any other intellectual property right is granted herein.

Unless otherwise noted, scripts and sample code are licensed under the Apache License, Version 2.0.

Copyright information for Cloudera software may be found within the documentation accompanying each component in a particular release.

Cloudera software includes software from various open source or other third party projects, and may be released under the Apache Software License 2.0 (“ASLv2”), the Affero General Public License version 3 (AGPLv3), or other license terms. Other software included may be released under the terms of alternative open source licenses. Please review the license and notice files accompanying the software for additional licensing information.

Please visit the Cloudera software product page for more information on Cloudera software. For more information on Cloudera support services, please visit either the Support or Sales page. Feel free to contact us directly to discuss your specific needs.

Cloudera reserves the right to change any products at any time, and without notice. Cloudera assumes no responsibility nor liability arising from the use of products, except as expressly agreed to in writing by Cloudera.

Cloudera, Cloudera Altus, HUE, Impala, Cloudera Impala, and other Cloudera marks are registered or unregistered trademarks in the United States and other countries. All other trademarks are the property of their respective owners.

Disclaimer: EXCEPT AS EXPRESSLY PROVIDED IN A WRITTEN AGREEMENT WITH CLOUDERA, CLOUDERA DOES NOT MAKE NOR GIVE ANY REPRESENTATION, WARRANTY, NOR COVENANT OF ANY KIND, WHETHER EXPRESS OR IMPLIED, IN CONNECTION WITH CLOUDERA TECHNOLOGY OR RELATED SUPPORT PROVIDED IN CONNECTION THEREWITH. CLOUDERA DOES NOT WARRANT THAT CLOUDERA PRODUCTS NOR SOFTWARE WILL OPERATE UNINTERRUPTED NOR THAT IT WILL BE FREE FROM DEFECTS NOR ERRORS, THAT IT WILL PROTECT YOUR DATA FROM LOSS, CORRUPTION NOR UNAVAILABILITY, NOR THAT IT WILL MEET ALL OF CUSTOMER’S BUSINESS REQUIREMENTS. WITHOUT LIMITING THE FOREGOING, AND TO THE MAXIMUM EXTENT PERMITTED BY APPLICABLE LAW, CLOUDERA EXPRESSLY DISCLAIMS ANY AND ALL IMPLIED WARRANTIES, INCLUDING, BUT NOT LIMITED TO IMPLIED WARRANTIES OF MERCHANTABILITY, QUALITY, NON-INFRINGEMENT, TITLE, AND FITNESS FOR A PARTICULAR PURPOSE AND ANY REPRESENTATION, WARRANTY, OR COVENANT BASED ON COURSE OF DEALING OR USAGE IN TRADE.

Contents

| | |
|--|----------|
| Install the MiNiFi Java agent..... | 4 |
| Before you begin installing MiNiFi Java agent..... | 4 |
| System requirements for MiNiFi Java..... | 4 |
| Installing Java for MiNiFi Java agent..... | 4 |
| Installing the MiNiFi Java agent..... | 4 |
| Installing the MiNiFi Java agent on Windows using the MSI..... | 5 |
| MiNiFi Java agent configurations..... | 12 |
| Configuring your MiNiFi Java agent..... | 12 |
| Configuring communication with secured EFM..... | 13 |
| Starting MiNiFi agent..... | 13 |

Install the MiNiFi Java agent

Learn how to install the MiNiFi Java agent. You need to install and configure the MiNiFi Java agent and then start it. You can also do the same on Windows.

Before you begin installing MiNiFi Java agent

To start using the MiNiFi Java agent, you need to install it. Learn how to obtain the MiNiFi Java software bit, install the agent, and configure it. Also learn the system requirements to do so.

System requirements for MiNiFi Java

Before you begin your installation of Cloudera Edge Management (CEM) software, carefully review the system requirements for MiNiFi Java to understand operating system and JDK support.

Operating system support

| Operating System | Version |
|------------------|--|
| RHEL/CentOS | 7.x, 8.x |
| Debian | 9 |
| Ubuntu | 16.04, 18.04 |
| Windows | 8, 10, Server 2012, Server 2012 R2, Server 2016, Server 2019 |

JDK support

| JDK | Version |
|------------|-------------|
| OpenJDK | JDK8, JDK11 |
| Oracle JDK | JDK8, JDK11 |

Installing Java for MiNiFi Java agent

You should install Java on each machine where you will install a MiNiFi Java agent.

Procedure

1. Download JDK from the appropriate website.
2. Run the installation command appropriate for your operating system:

For RHEL/CentOS:

```
yum install java-1.8.0-openjdk
```

For Debian and Ubuntu:

```
apt-get install openjdk-8-jre
```

Installing the MiNiFi Java agent

To install your MiNiFi Java agent, you need to download the software for the agent and extract it.

Procedure

1. Download the tar.gz or zip files for the MiNiFi Java agent.

```
wget {java.tar.gz}
```

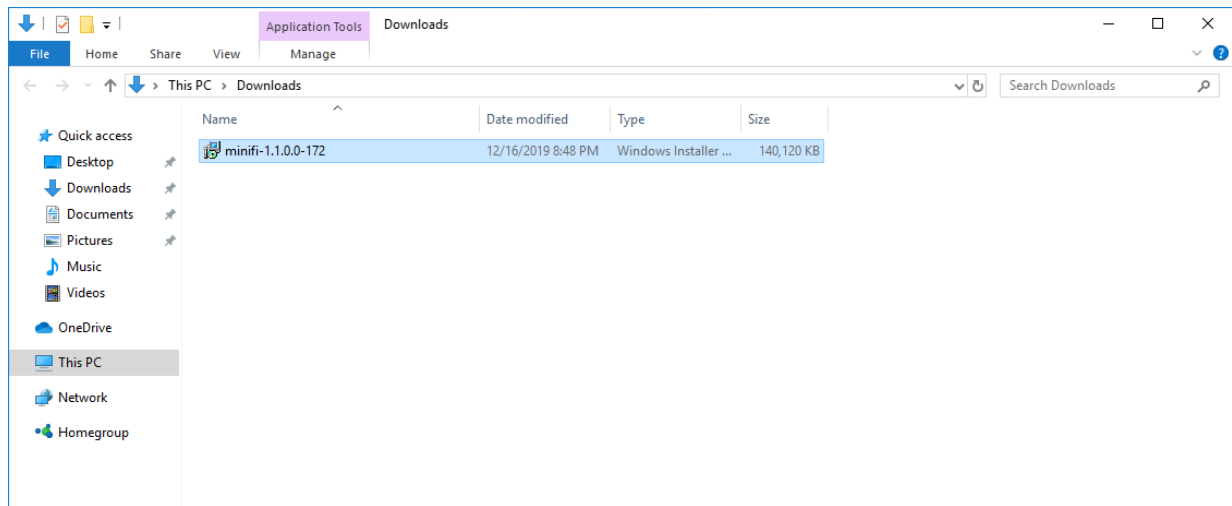
2. To install the MiNiFi Java agent, extract the file to your desired home directory.

Installing the MiNiFi Java agent on Windows using the MSI

Learn how to install and configure the MiNiFi Java agent on Windows by using the provided MSI.

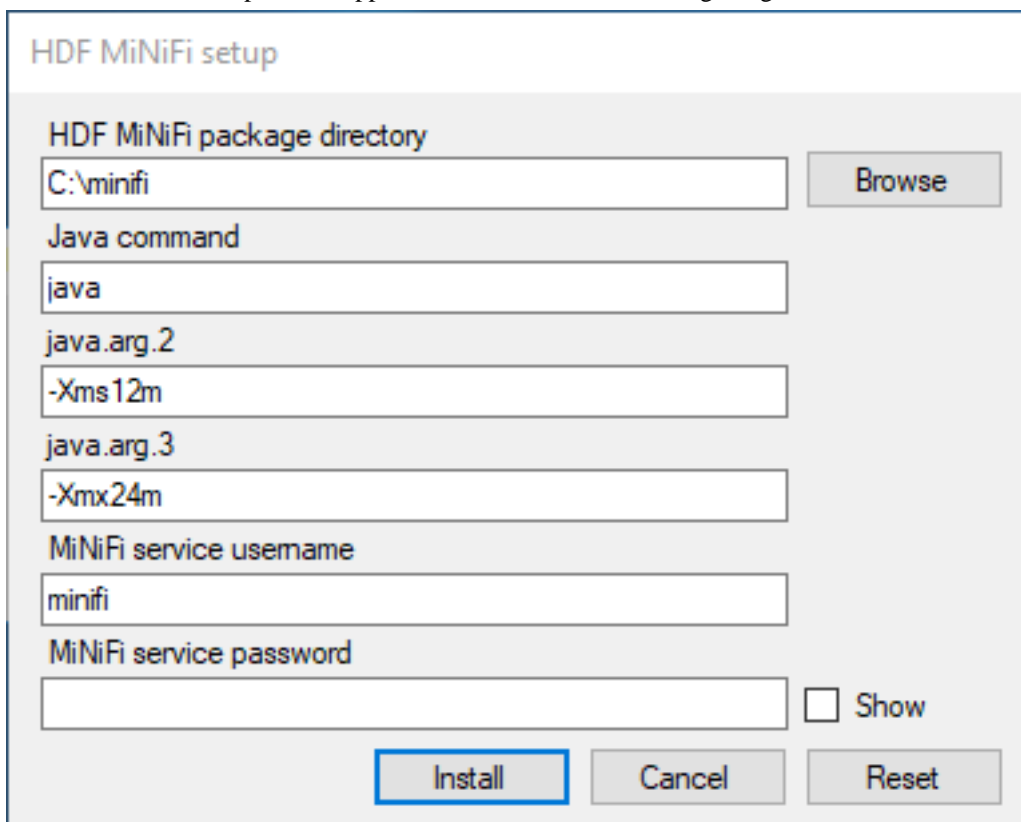
Procedure

1. Download the MiNiFi Java installer in your PC through the payroll.



2. Double-click the executable file.

The HDF MiNiFi setup wizard appears, as shown in the following image:



The image shows the 'HDF MiNiFi setup' dialog box. It contains several input fields and buttons. The 'HDF MiNiFi package directory' field is set to 'C:\minifi' with a 'Browse' button next to it. The 'Java command' field is set to 'java'. The 'java.arg.2' field is set to '-Xms12m'. The 'java.arg.3' field is set to '-Xmx24m'. The 'MiNiFi service username' field is set to 'minifi'. The 'MiNiFi service password' field is empty, with a 'Show' checkbox to its right. At the bottom, there are three buttons: 'Install' (highlighted with a blue border), 'Cancel', and 'Reset'.

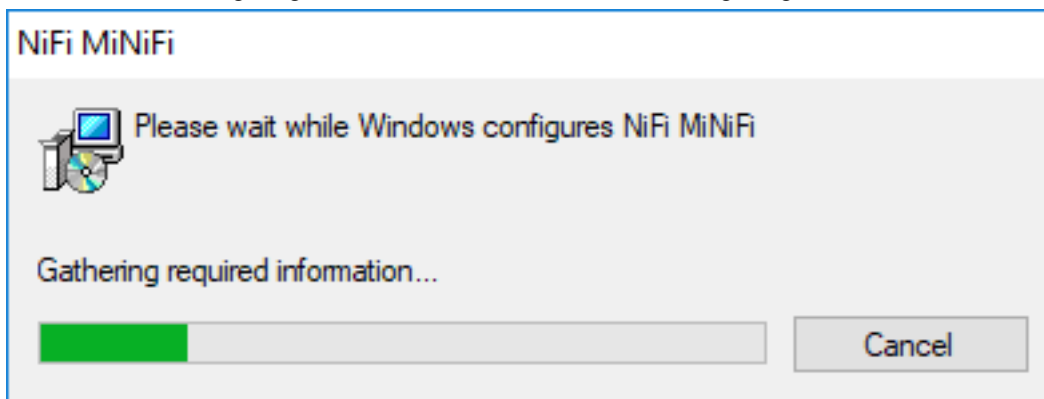
3. Configure the Java command option to the path of the java installation you would like to use.



Note: By default, CEM assumes that java is on your system's path.

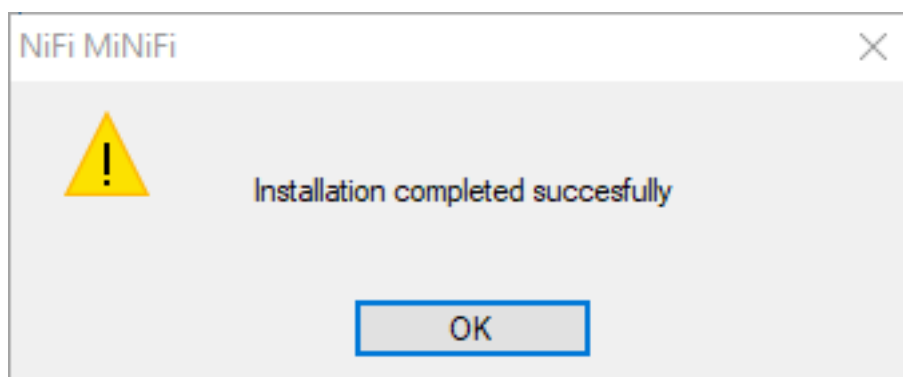
4. Click Install.

Windows starts configuring NiFi MiNiFi, as shown in the following image:

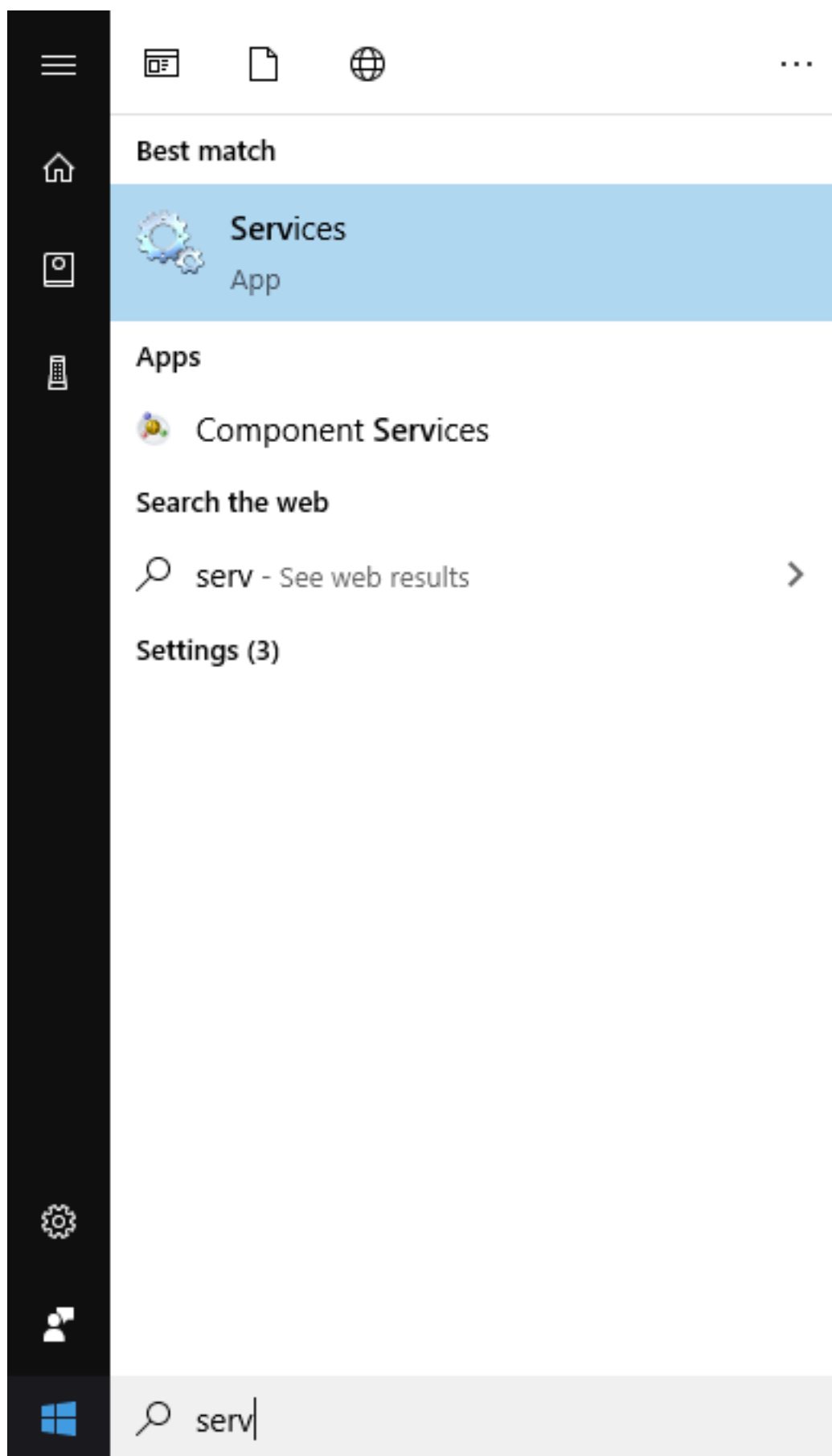


The image shows the 'NiFi MiNiFi' configuration progress dialog box. It features a progress bar at the bottom, which is partially filled with green. Above the progress bar, the text 'Please wait while Windows configures NiFi MiNiFi' is displayed, followed by 'Gathering required information...'. A 'Cancel' button is located at the bottom right.

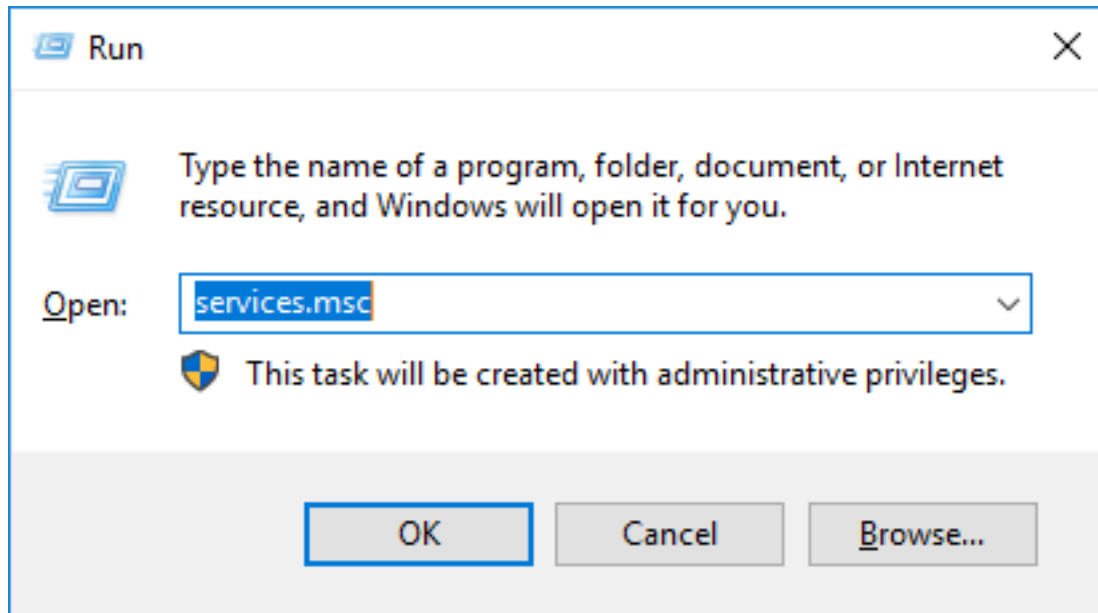
5. Click OK when installation completes.



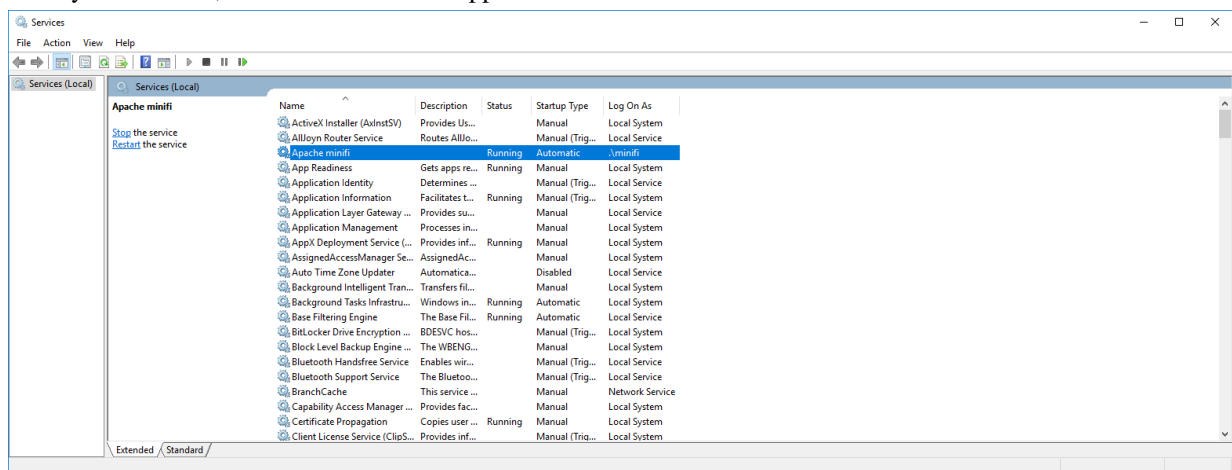
6. Search for services in the Start menu of your PC and open it, as shown in the following image:



You can also run services by pressing [Windows key + R] and then typing `services.msc` in the Open field, as shown in the following image:



After you click OK, the Services window appears.



7. In the Services window, double-click Apache minifi.
The Apache minifi Properties (Local Computer) window appears.

8. Check the services setup and click OK.

Apache minifi Properties (Local Computer)

General Log On Recovery Dependencies

Service name: **minifi**

Display name: Apache minifi

Description:

Path to executable:
C:\minifi\minifi-0.6.0.1.1.0.0-172\minifi.exe

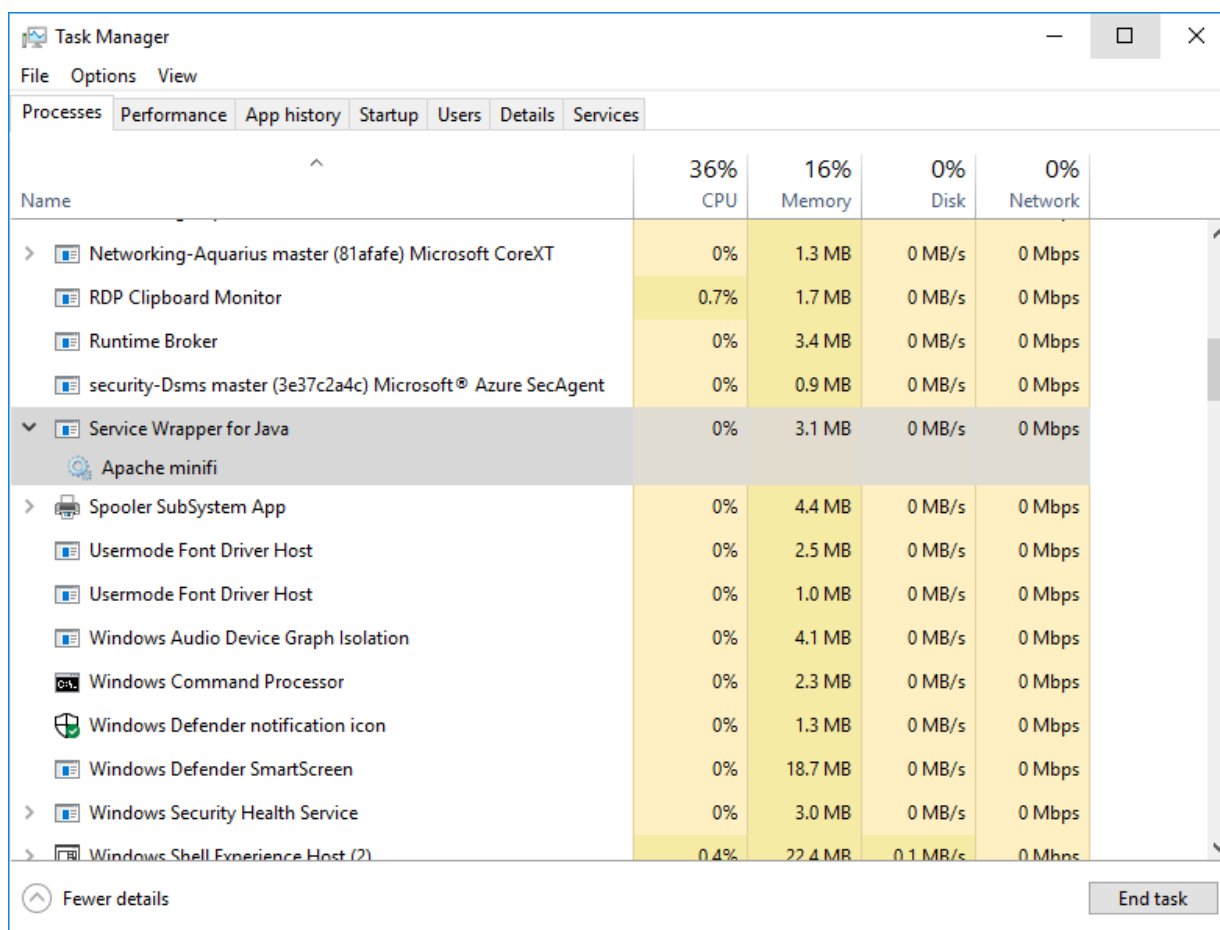
Startup type: Automatic

Service status: Running

You can specify the start parameters that apply when you start the service from here.

Start parameters:

9. In the Task Manager window confirm whether the process is running.



10. Exit or close the window when done.

MiNiFi Java agent configurations

Learn about different configurations that you can perform for your MiNiFi Java agent.

Configuring your MiNiFi Java agent

After you install the MiNiFi Java agent, you need to update the configuration files.

About this task

If you are configuring a MiNiFi Java agent, the configuration file is `conf/bootstrap.conf`.

Procedure

1. From the MiNiFi home directory, open the configuration file.
2. Configure the agent class so that you can logically group MiNiFi Java instances according to their functionality.

```
nifi.c2.agent.class={AGENT_CLASS}
```



Note: Leading and trailing whitespaces are accepted for Agent Class names so consider this when configuring agents.

3. Configure the agent ID. If you do not specify an agent ID, MiNiFi generates a unique ID per agent instance.

```
nifi.c2.agent.identifier={AGENT_ID}
```

4. Set the `nifi.c2.enable` property to true to inform MiNiFi that run time flow instructions will be received from EFM.

```
nifi.c2.enable=true
```

5. Configure your EFM Server endpoint:

```
nifi.c2.rest.url=http://{EFM_SERVER_IP}:10090/efm/api/c2-protocol/heartbeat
nifi.c2.rest.url.ack=http://{EFM_SERVER_IP}:10090/efm/api/c2-protocol/acknowledge
```

6. Configure your heartbeat interval:

```
nifi.c2.agent.heartbeat.period={HEARTBEAT_INTERVAL}
```

Configuring communication with secured EFM

To communicate with secured EFM, you need to configure additional properties.

About this task

If you are configuring a MiNiFi Java agent, the configuration file is `conf/bootstrap.conf`.

Procedure

For the Java agent, configure the following additional properties in the `bootstrap.conf` file to communicate with a secured EFM:

```
c2.security.truststore.location=
c2.security.truststore.password=
c2.security.truststore.type=
c2.security.keystore.location=
c2.security.keystore.password=
c2.security.keystore.type=
```

Starting MiNiFi agent

After MiNiFi is installed and configured, you can start it. Learn how to start your MiNiFi agent.

Procedure

1. From a terminal window, navigate to the MiNiFi installation directory.
2. To start MiNiFi in the foreground, enter:

```
bin/minifi.sh run
```

3. To start MiNiFi in the background, enter:

```
bin/minifi.sh start
```