

## Credit Consumption and Usage Insights

Date published: 2019-08-22

Date modified:



# Legal Notice

© Cloudera Inc. 2024. All rights reserved.

The documentation is and contains Cloudera proprietary information protected by copyright and other intellectual property rights. No license under copyright or any other intellectual property right is granted herein.

Unless otherwise noted, scripts and sample code are licensed under the Apache License, Version 2.0.

Copyright information for Cloudera software may be found within the documentation accompanying each component in a particular release.

Cloudera software includes software from various open source or other third party projects, and may be released under the Apache Software License 2.0 (“ASLv2”), the Affero General Public License version 3 (AGPLv3), or other license terms. Other software included may be released under the terms of alternative open source licenses. Please review the license and notice files accompanying the software for additional licensing information.

Please visit the Cloudera software product page for more information on Cloudera software. For more information on Cloudera support services, please visit either the Support or Sales page. Feel free to contact us directly to discuss your specific needs.

Cloudera reserves the right to change any products at any time, and without notice. Cloudera assumes no responsibility nor liability arising from the use of products, except as expressly agreed to in writing by Cloudera.

Cloudera, Cloudera Altus, HUE, Impala, Cloudera Impala, and other Cloudera marks are registered or unregistered trademarks in the United States and other countries. All other trademarks are the property of their respective owners.

Disclaimer: EXCEPT AS EXPRESSLY PROVIDED IN A WRITTEN AGREEMENT WITH CLOUDERA, CLOUDERA DOES NOT MAKE NOR GIVE ANY REPRESENTATION, WARRANTY, NOR COVENANT OF ANY KIND, WHETHER EXPRESS OR IMPLIED, IN CONNECTION WITH CLOUDERA TECHNOLOGY OR RELATED SUPPORT PROVIDED IN CONNECTION THEREWITH. CLOUDERA DOES NOT WARRANT THAT CLOUDERA PRODUCTS NOR SOFTWARE WILL OPERATE UNINTERRUPTED NOR THAT IT WILL BE FREE FROM DEFECTS NOR ERRORS, THAT IT WILL PROTECT YOUR DATA FROM LOSS, CORRUPTION NOR UNAVAILABILITY, NOR THAT IT WILL MEET ALL OF CUSTOMER’S BUSINESS REQUIREMENTS. WITHOUT LIMITING THE FOREGOING, AND TO THE MAXIMUM EXTENT PERMITTED BY APPLICABLE LAW, CLOUDERA EXPRESSLY DISCLAIMS ANY AND ALL IMPLIED WARRANTIES, INCLUDING, BUT NOT LIMITED TO IMPLIED WARRANTIES OF MERCHANTABILITY, QUALITY, NON-INFRINGEMENT, TITLE, AND FITNESS FOR A PARTICULAR PURPOSE AND ANY REPRESENTATION, WARRANTY, OR COVENANT BASED ON COURSE OF DEALING OR USAGE IN TRADE.

# Contents

<b>Credit consumption and usage insights.....</b>	<b>4</b>
---	----------

## Credit consumption and usage insights

CDP includes a user interface that allows you to monitor your credit consumption and download your consumption records.

CDP Public Cloud displays consumption data in terms of credits. A credit is a unit of consumption in CDP Public Cloud.

There is a two-day time delta for the consumption data showing up in the Consumption page. You should not expect to see data for consumption, which occurred within the past two days.

Required roles: BillingAdmin

Steps

1. Navigate to the CDP web interface and select Management Console.

## 2. Select Consumption from the navigation pane.

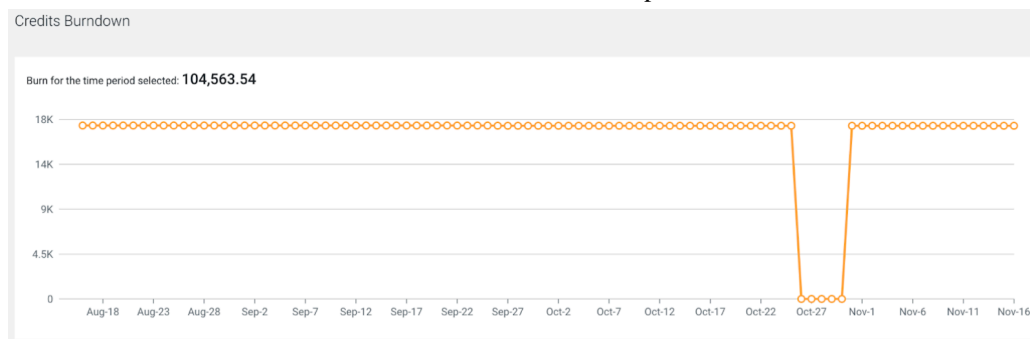
On the **Consumption** page, you can view the **Credit Summary**, **Credits Burndown** and **Usage Insights**. By default, the consumption summaries are shown for all environments. You can further customize the visualization of consumption based on time, specific environments, and tags.

### Credit Summary

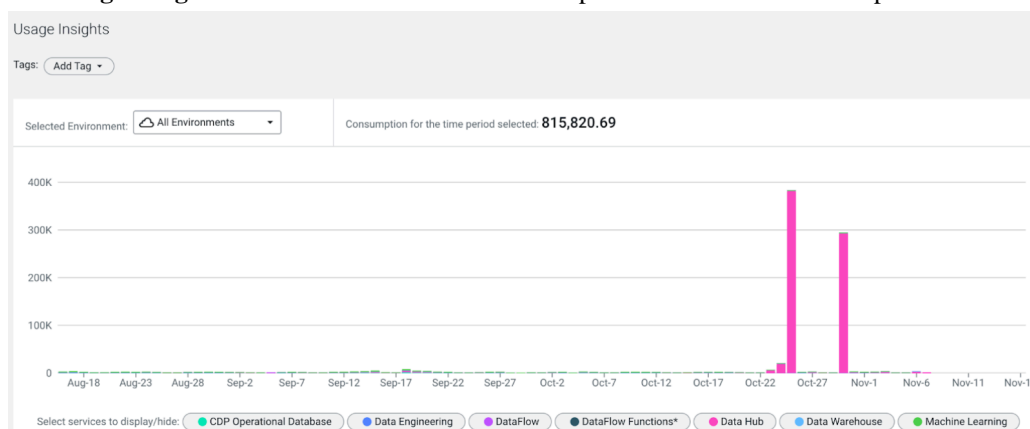
Displays credit information based on your credit subscription.

### Credits and Usage Insights

- The **Credits Burndown** chart shows the credit used over a period of time.



- The **Usage Insights** bar chart shows the total consumption of the services over a period of time.



- The **Clusters** table shows the number of the number of credits used by the clusters, number of hours the cluster was running, and how many clusters belong to the specific services.

Clusters

Service	Cluster Name	Credits Consumed	Usage	Cluster Template	Hrs	Environment Name	Cluster CRN
All Services		816K Credits	2.5M Hrs	8.1K Clusters			
CDP Operational Database		17K Credits	40K Hrs	287 Clusters			
Data Engineering		30K Credits	73K Hrs	904 Clusters			
DataFlow		4.2K Credits	14K CCU	3.5K Clusters			
DataFlow Functions		0 Credits	0 Invocations	0 Clusters			
Data Hub		738K Credits	2.3M Hrs	309 Clusters			
Data Warehouse		12K Credits	17K Hrs	2.2K Clusters			
Machine Learning		14K Credits	16K Hrs	880 Clusters			
DataFlow	a	4.5	15 CCU		0		cm.cdp.df.us-w...
DataFlow	a	5.4	18 CCU		0		cm.cdp.df.us-w...
DataFlow	a	0.41	1.4 CCU		0		cm.cdp.df.us-w...
DataFlow	a	0.83	2.8 CCU		0		cm.cdp.df.us-w...
DataFlow	a	0.08	0.28 CCU		0		cm.cdp.df.us-w...
DataFlow	a	3.77	13 CCU		0		cm.cdp.df.us-w...
DataFlow	a1	1.65	5.5 CCU		0		cm.cdp.df.us-w...
DataFlow	a2	1.65	5.5 CCU		0		cm.cdp.df.us-w...
DataFlow	a3	1.64	5.5 CCU		0		cm.cdp.df.us-w...
DataFlow	a4	1.59	5.3 CCU		0		cm.cdp.df.us-w...

< 1 2 3 4 5 ... 868 > 10 / page

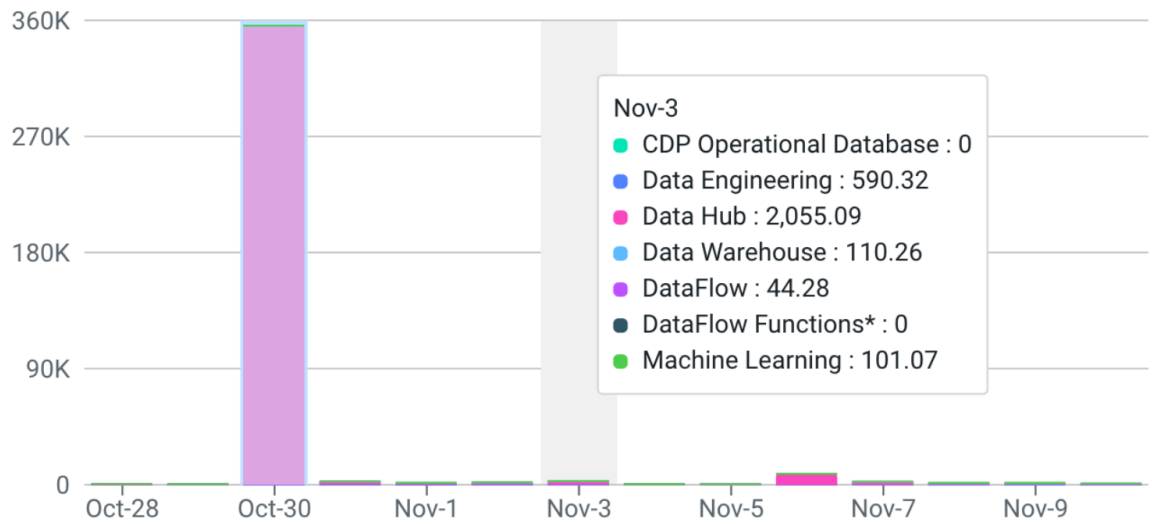
- Select a date range to display the consumption for a time period. The selected time period can be one month, three months, six months and one year in a daily or monthly view.
- Select tags to further filter the clusters in the environments for **Usage Insights**. The filter uses the user-level tags of the clusters. When selecting multiple tags, the clusters are displayed using OR logic. For example, if you select

department=engineering and department=finance, the clusters will be shown on the **Usage Insights** that have a department tag value of engineering or finance.

5. Select all or specific environments.

You can view the **Usage Insights** of the clusters for all existing environments or select a specific one.

a. Hover over a bar to display consumption information by services.



Select or hide services that are displayed on the **Usage Insights** chart.

Displaying the consumption information of the specific services associated with the environments can be enabled and disabled.

b. Click on a bar to display consumption information by clusters.

Clusters

Filter By Services

Search Cluster Name

All Services

816K Credits 2.5M Hrs 8.1K Clusters

CDP Operational Database

17K Credits 40K Hrs 287 Clusters

Data Engineering

30K Credits 73K Hrs 904 Clusters

DataFlow

4.2K Credits 14K CCU 3.5K Clusters

DataFlow Functions

0 Credits 0 Invocations 0 Clusters

Data Hub

738K Credits 2.3M Hrs 309 Clusters

Data Warehouse

12K Credits 17K Hrs 2.2K Clusters

Machine Learning

14K Credits 16K Hrs 880 Clusters

Service	Cluster Name	Credits Consumed	Usage	Cluster Template	Hrs	Environment Name	Cluster CRN
DataFlow	260	4.5	15 CCU		0		cm.cdp.dfus-w...
DataFlow	a	5.4	18 CCU		0		cm.cdp.dfus-w...
DataFlow	a	0.41	1.4 CCU		0		cm.cdp.dfus-w...
DataFlow	a	0.83	2.8 CCU		0		cm.cdp.dfus-w...
DataFlow	a	0.08	0.28 CCU		0		cm.cdp.dfus-w...
DataFlow	a	3.77	13 CCU		0		cm.cdp.dfus-w...
DataFlow	a1	1.65	5.5 CCU		0		cm.cdp.dfus-w...
DataFlow	a2	1.65	5.5 CCU		0		cm.cdp.dfus-w...
DataFlow	a3	1.64	5.5 CCU		0		cm.cdp.dfus-w...
DataFlow	a4	1.59	5.3 CCU		0		cm.cdp.dfus-w...

< 1 2 3 4 5 ... 868 >

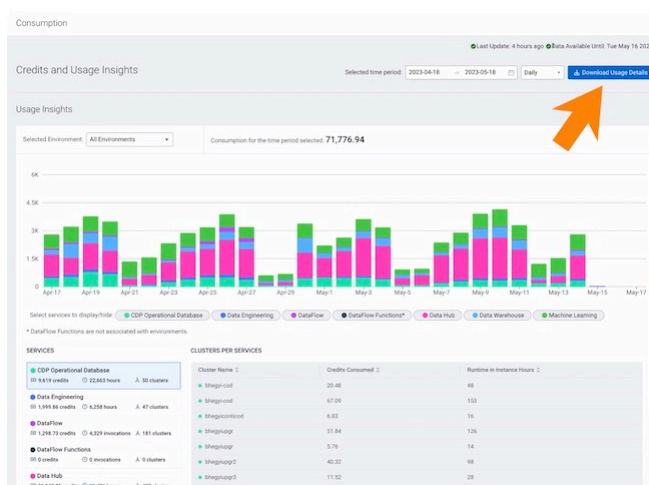
10 / page

You can view credit and usage information of clusters that belong to all services or a specific service.

Clusters can also be searched by providing their name in the search field.

Download consumption summary from CDP web interface

Use the Download Usage Details option to download the consumption data:



### Download consumption summary from CDP CLI

Use the `cdp consumption list-compute-usage-records` command to download the consumption data. For example:

```
cdp consumption list-compute-usage-records \
--from-timestamp '2023-02-05T00:00:00Z' \
--to-timestamp '2023-02-07T00:00:00Z'
```

You can optionally set page size and page token.

To set page size (the number of records you want on one page), add the `--page-size <value>` option to the above command..

To set page token (which signifies which page you would like in the response), add the `--starting-token <value>` option to the above command. You will get the starting token for the next page in the response of the previous page.